

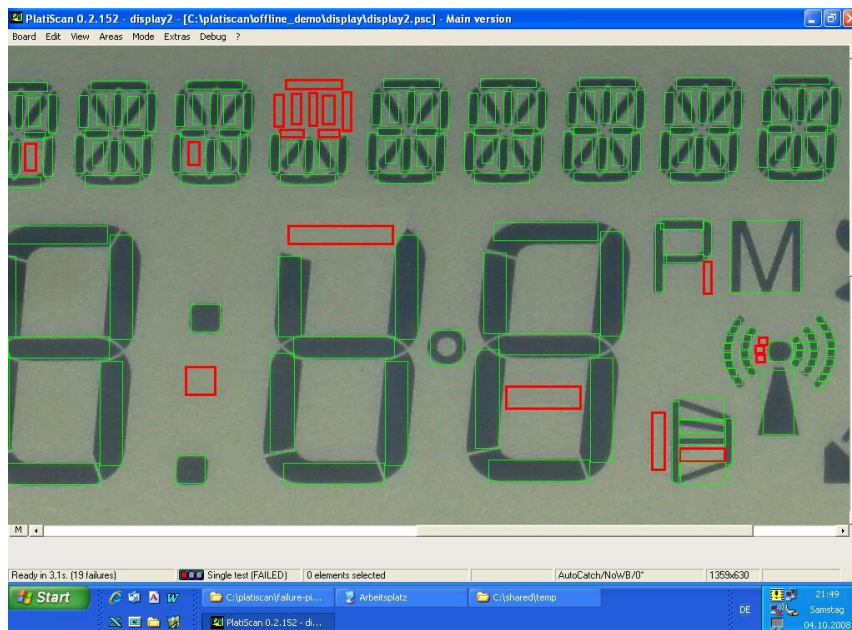
*"You can see it? Then we can detect it!"*

## Optical Inspection System for fast Automated Visual Inspection

### PlatiScan DisplayTest

PlatiScan VI is an automated Visual Inspection System, transforming the human visual inspection procedure into software.

Protected algorithms can detect board failures which usually are found only by manual visual inspection. A new application of PlatiScan VI is Display-Test.



The system consists of a photo-camera, to be positioned above the Display, a PC Controller and the PlatiScan VI-Software. Then an image is taken via remote control and an RGB analysis is done on the PC. The detected failures can be reported as text or graphically displayed.

PlatiScan VI is a cooperative development of:

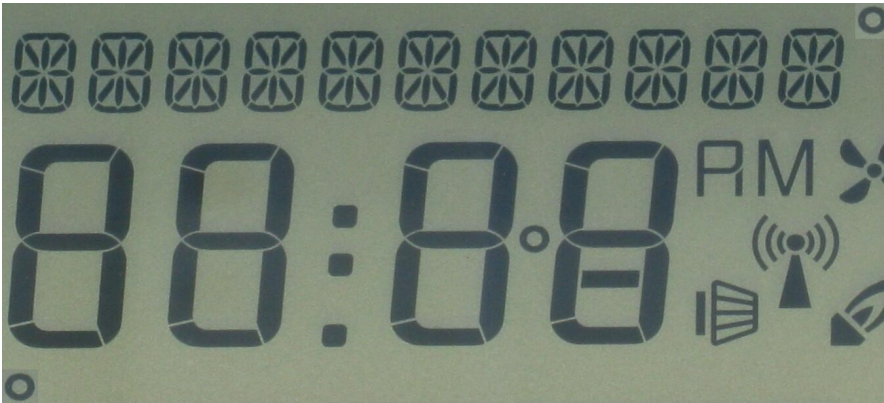


Stand: 23.09.2009

*"You can see it? Then we can detect it!"*

Can you see all failures?

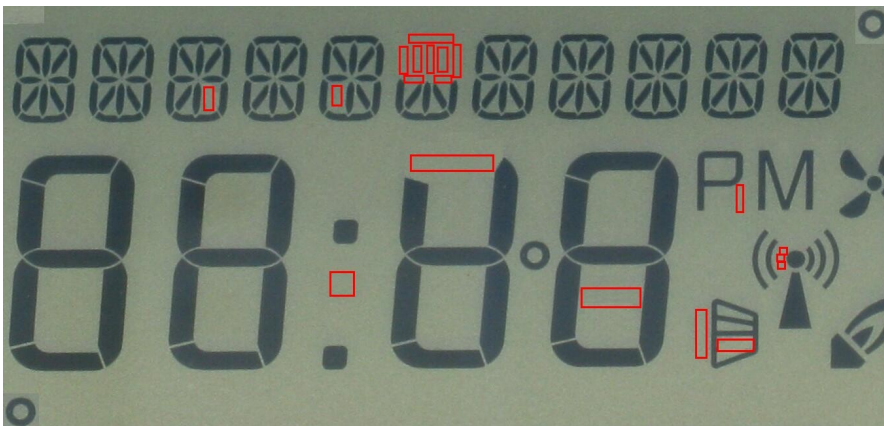
PASS



FAIL



100% Automatic Detection by PlatiScan



Stand: 23.09.2009