

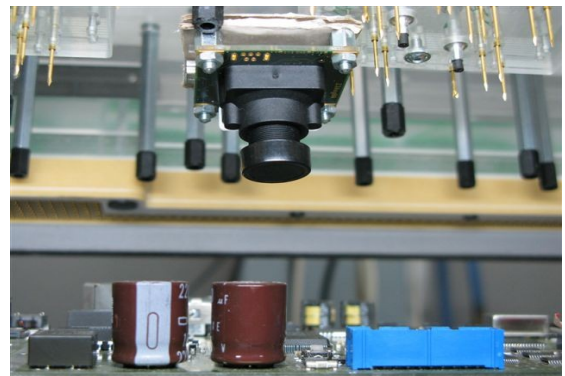
*"You can see it? Then we can detect it!"*

## Optical Inspection System for fast Automated Visual Inspection

### PlatiScan JetTest: Camera inside Testfixture

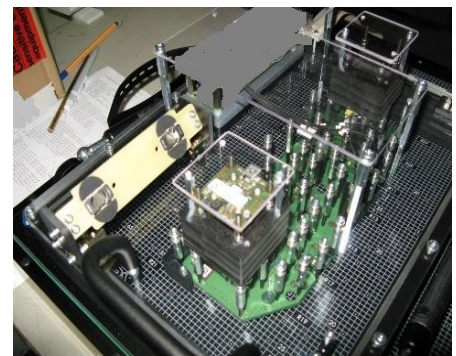
*Testing "on the fly" as part of Incircuit-Tests.*

- VGA-resolution up to **5 MPixel**
- up to **8 cameras** can be connected
- Colour or Black&White
- Testtimes below 1 second \*
- fully integrated in testplan
- Expansion to other than ICT-testsystems, like Boundary Scan, Functional Test, Flying Probe, ...
- For **Display-, LED-, Polarity-**Testing or simply for Presence-Test of electrically non-testable parts.
- Failure-output graphically or as ASCII-report
- **Transfer of Data to Repair-Station**



Protected algorithms can detect board failures which usually are found only by manual visual inspection.

**PlatiScan JetTest** can control up to 8 fix mounted USB-Micro-cameras inside the testfixture. That way special areas of single devices can be inspected very precisely. And all in parallel to the electrical test.



\* depending on testtype and number of tests

PlatiScan VI is a cooperative development of :

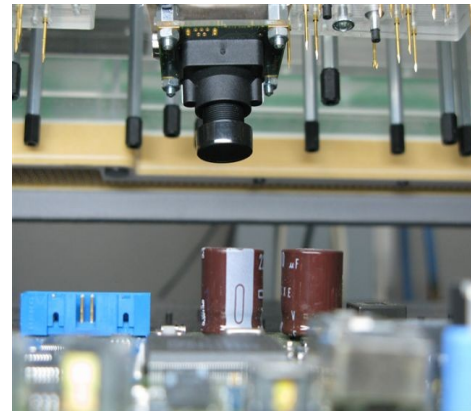
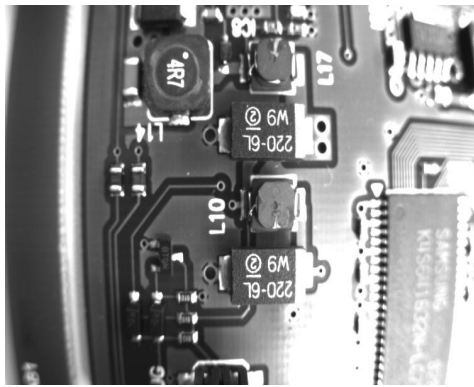
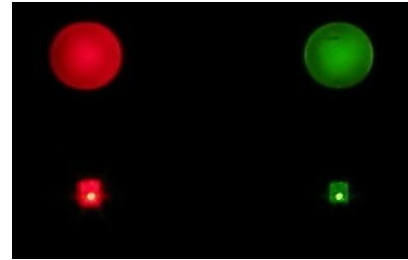
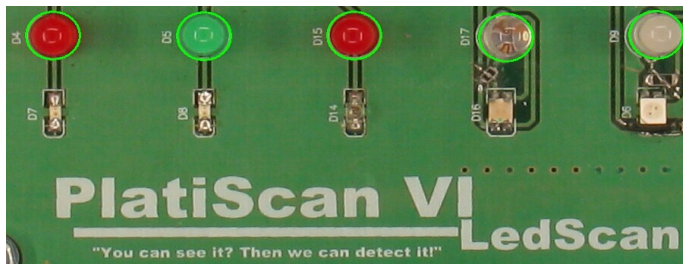


**AMARANT**  
S O F T W A R E

Stand: 01.10.2009

*"You can see it? Then we can detect it!"*

**PlatiScan-JetTest Impression**



Stand: 01.10.2009